

WHY ESPΩL?





ESPΩL

The European School of Political and Social Sciences, was established to prepare students for political and international careers through innovative pedagogy in a multicultural environment. Ten years on from its launch, ESPOL continues to thrive thanks to its bilingual (French/English) and interdisciplinary programme, which now consists of three undergraduate bachelors degrees, four masters degrees, and a doctoral school.

ESPOL has always been open to the world and to Europe in particular. This is reflected in our team, which represents 12 different nationalities, in the fact that 86% of our students go abroad to study at one of our 150 partner universities and that, in return, we welcome more than 150 exchange students every year, a figure that is constantly increasing.

ESPOL's wide variety of classes offers students the possibility to discover new and exciting topics in politics, international relations and social science in a truly bilingual environment. Why not benefit from your time here and improve or even start learning French through our special language classes for exchange students? Beyond the intellectual environment, there is also a dense and varied network of student associations as ESPOL encourages students to become active citizens help the community and make new friends of course. In particular, there is a "buddy system" organised by COSMOPOL, our very own student society, to help integrate foreign students arriving at ESPOL.

In 2019, ESPOL moved into its new building at the heart of the beautiful campus of the Catholic University of Lille, which unlike most French universities is situated at the heart of the urban area. ESPOL thus benefits from its location in the dynamic city of Lille, a European metropolis at the crossroads of Europe. As well as having a distinguished historical and industrial past, Lille is a short train ride from Paris, Brussels, London and Amsterdam.

We hope you will discover Lille, its lively student scene, its wide range of cultural activities, and its delicious gastronomic specialities (le welsh, la carbonnade flamande; le potjevleesch, les gaufres and more) that provide a very special "joie de vivre".

Preparing students for political and international careers through innovative pedagogy in a multicultural environment: this is ESPOL's mission. Ten years after its inauguration, ESPOL has built its success on the strength of a multilingual, interdisciplinary programme and a unique educational approach.



**Andrew
Glencross**

Director of ESPOL

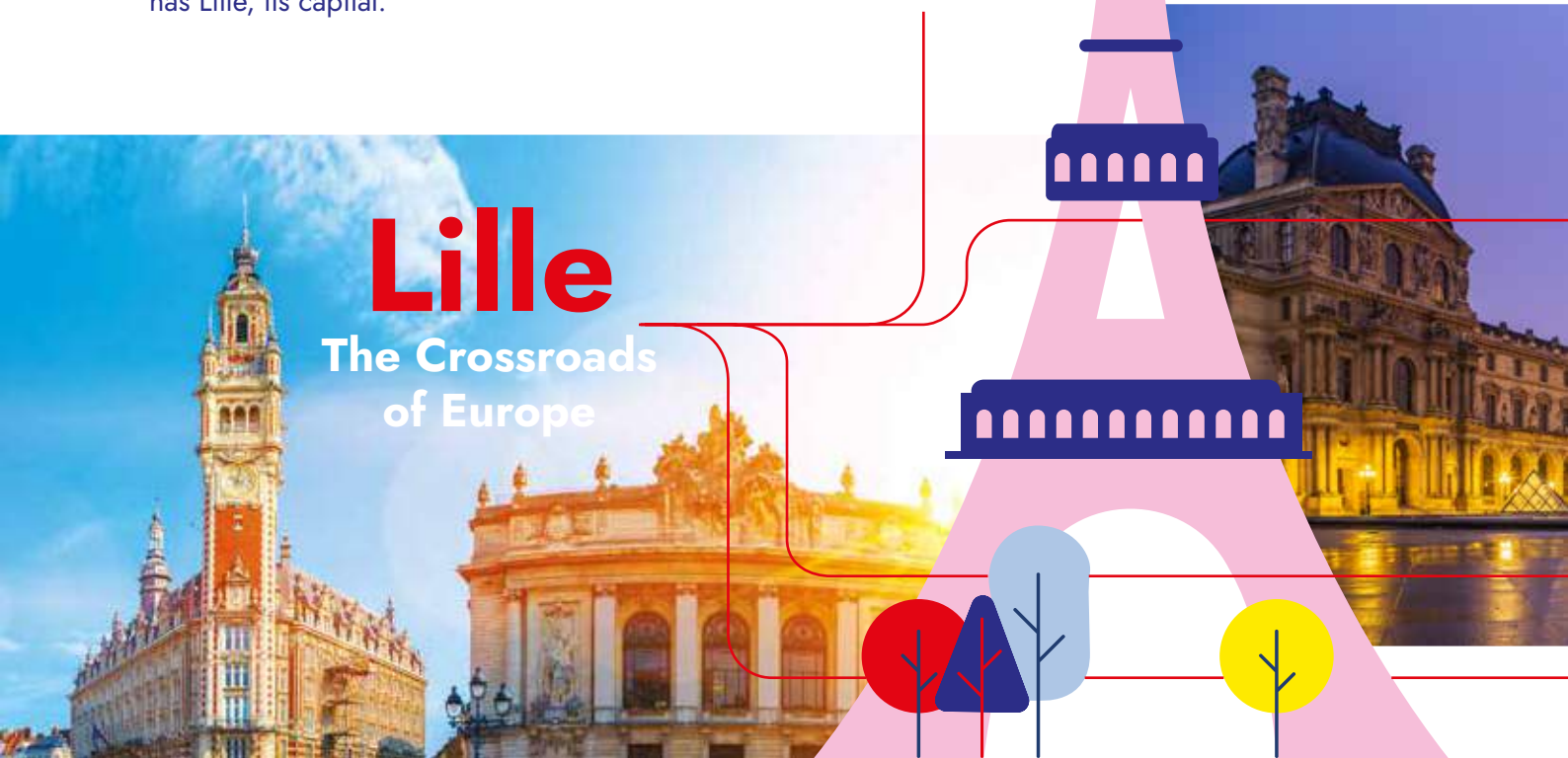
*We hope you will
discover Lille, its
delicious gastronomic
specialities (le welsh, la
carbonnade flamande;
le potjevleesch, les
gaufres and more), its
unique culture and the
French **"Joie de vivre"***

A dynamic region

The northernmost region of France, the Hauts-de-France is a dynamic region with a strong will to develop relationships with other countries. With excellent communications and an extensive network of businesses and industries, the area has proven its strategic position in Europe throughout the centuries. So too has Lille, its capital.



/2h30 from Amsterdam

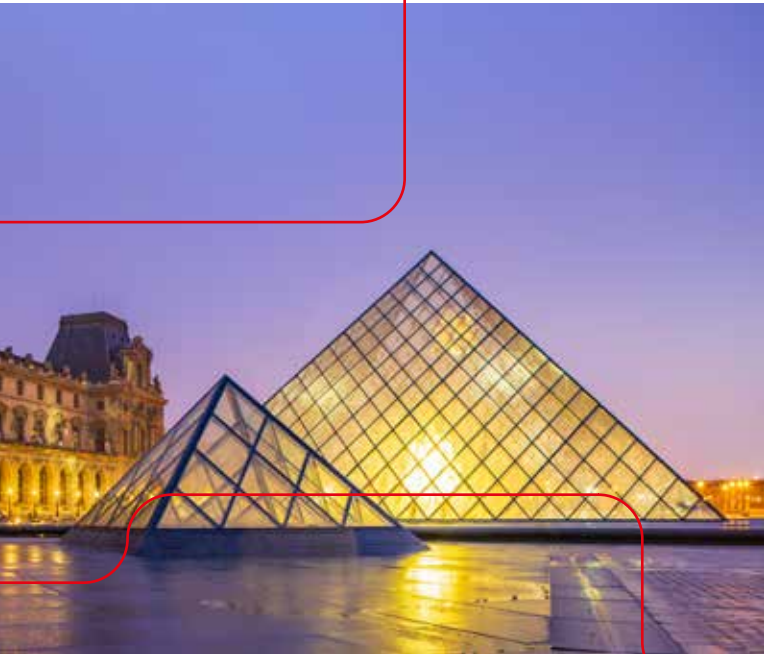


Lille

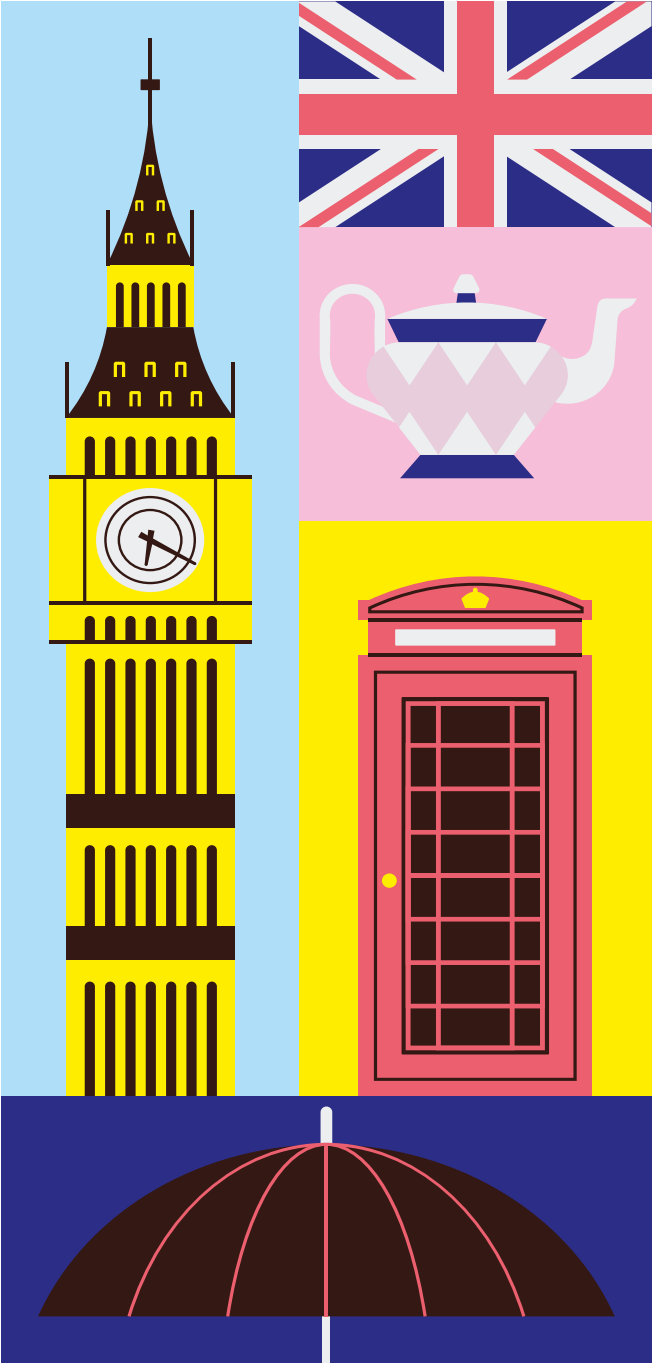
The Crossroads
of Europe



/45m from Brussels



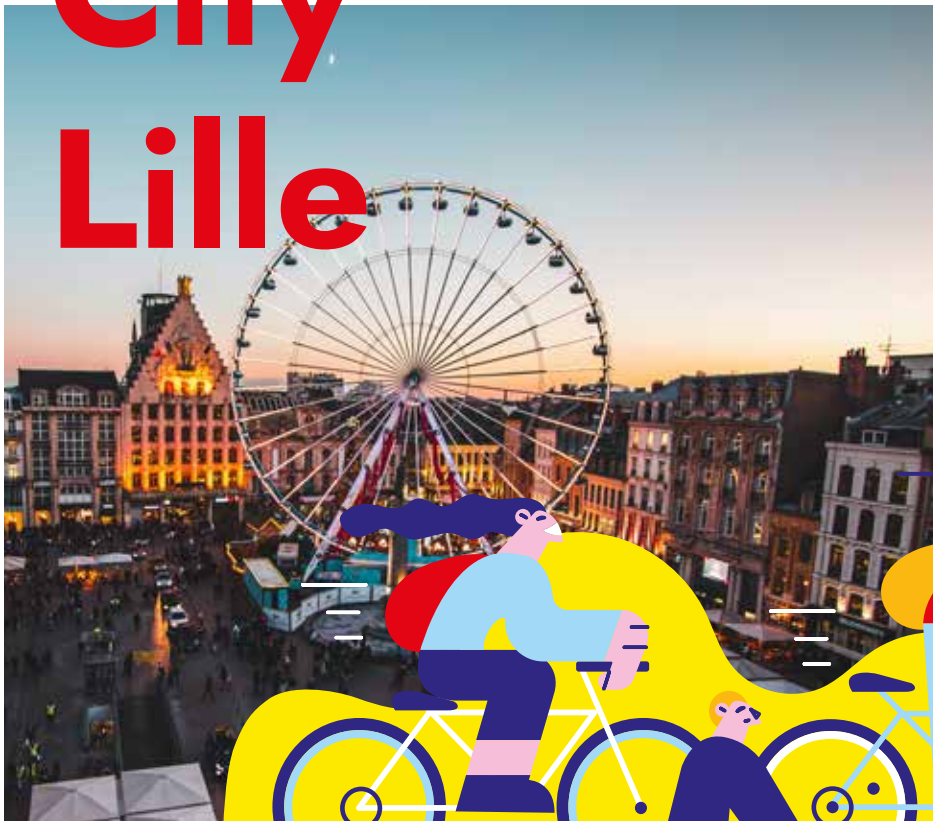
/1h from Paris



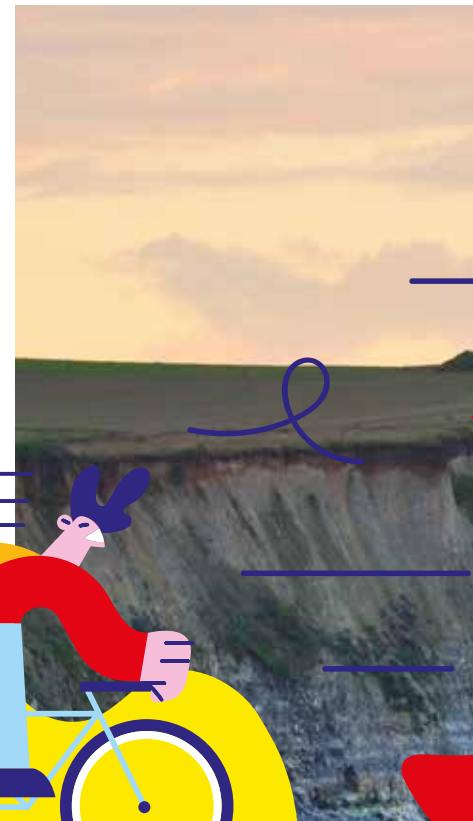
/1h30 from London

Your City Lille

You will have at your disposal all the facilities of a major city whilst still being in a 'human-sized' place that you can get about mainly on foot or by bicycle. It's easy to find your way around in Lille as there are 4 main areas:



/Lille - Grand'Place



the Old Town (le Vieux Lille) that stretches from the north of Lille to the opera house, the centre that goes from the opera house to the Place de la République, the district known as Vauban in the west of Lille and the Wazemmes district to the east.



35

theatres

10

museums

34

festivals

20

cinemas

The famous
Braderie

Lille

A red wavy line that starts at the end of the word 'Lille' and curves downwards and to the right, ending at the edge of the frame.





UNIVERSITÉ
CATHOLIQUE
DE LILLE 1875

5

faculties

8

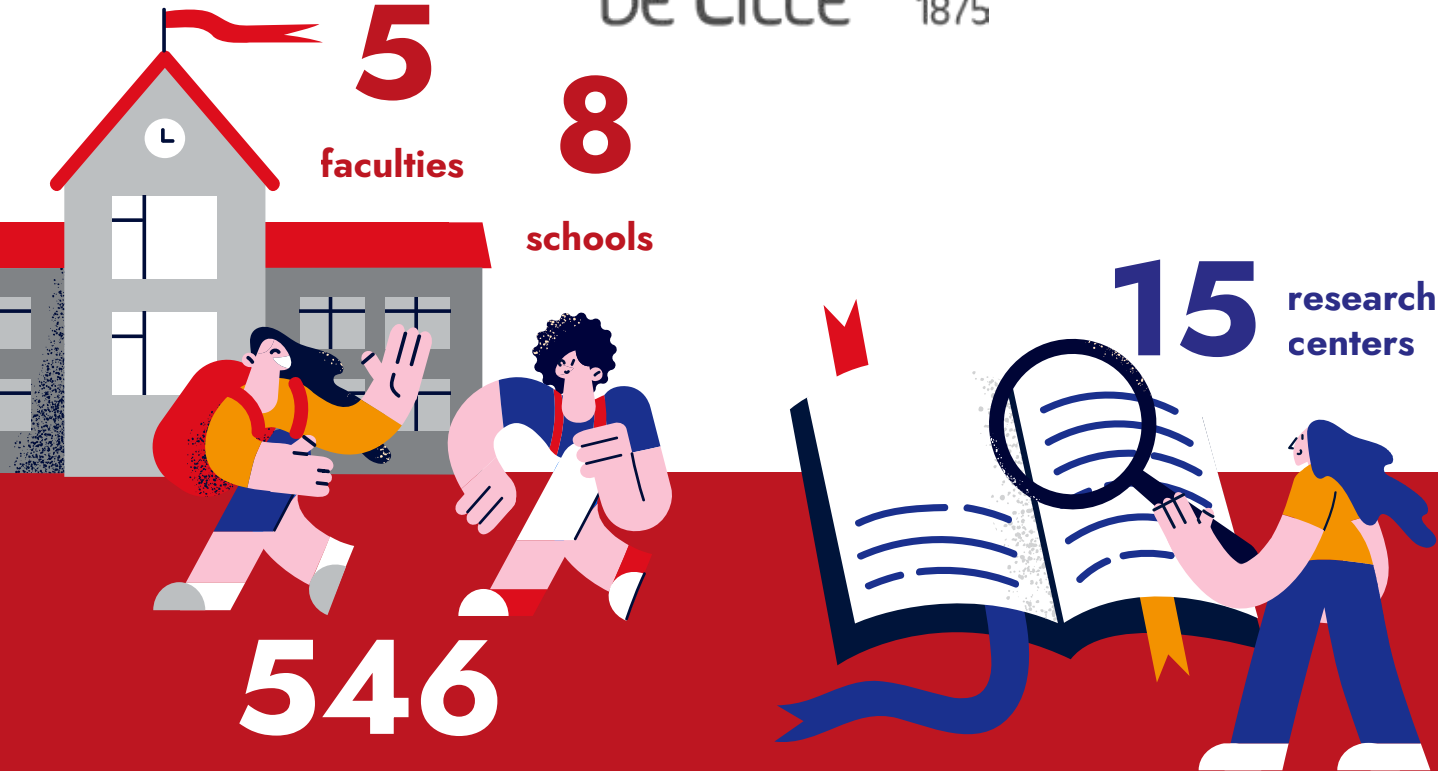
schools

15

research
centers

546

partner universities

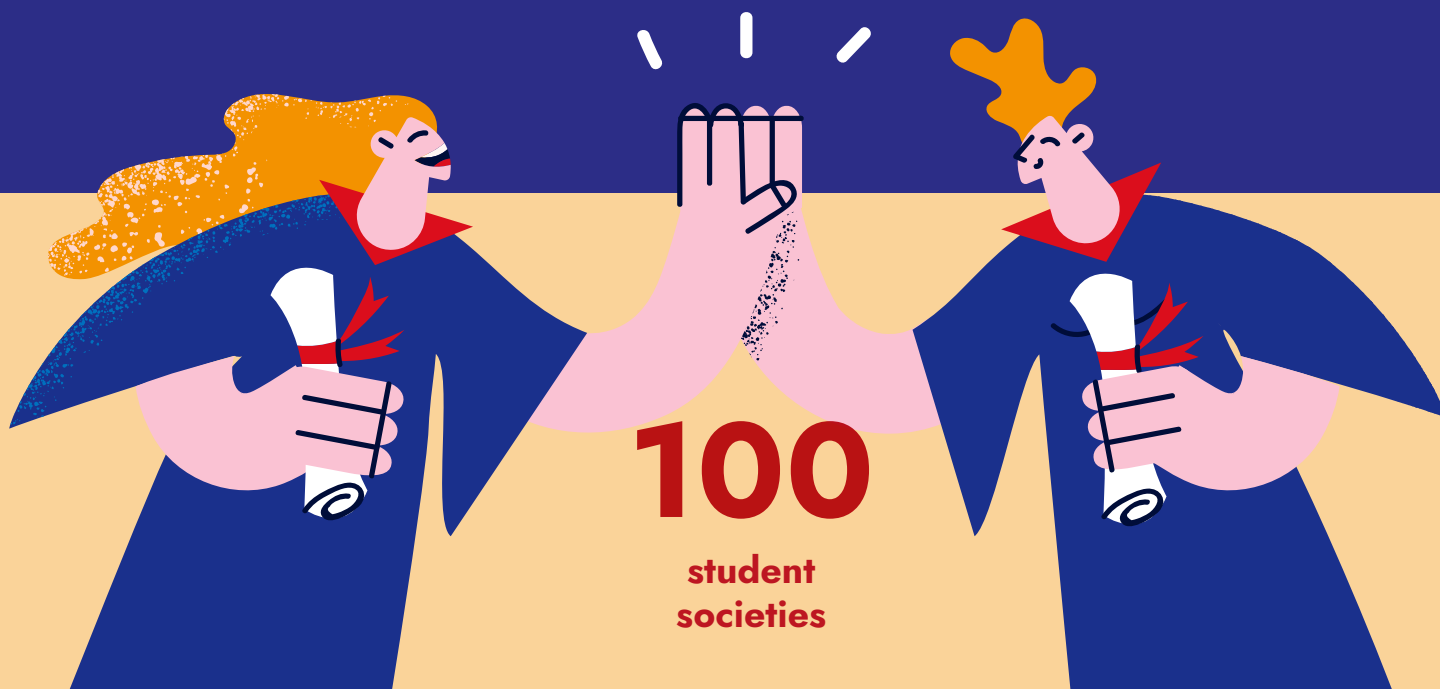


320

undergraduate
and Master's
programmes



more than
40,000
students



100

student
societies



ESPΩL

**is a bilingual academic training programme in political science,
with a strong European and international dimension.**

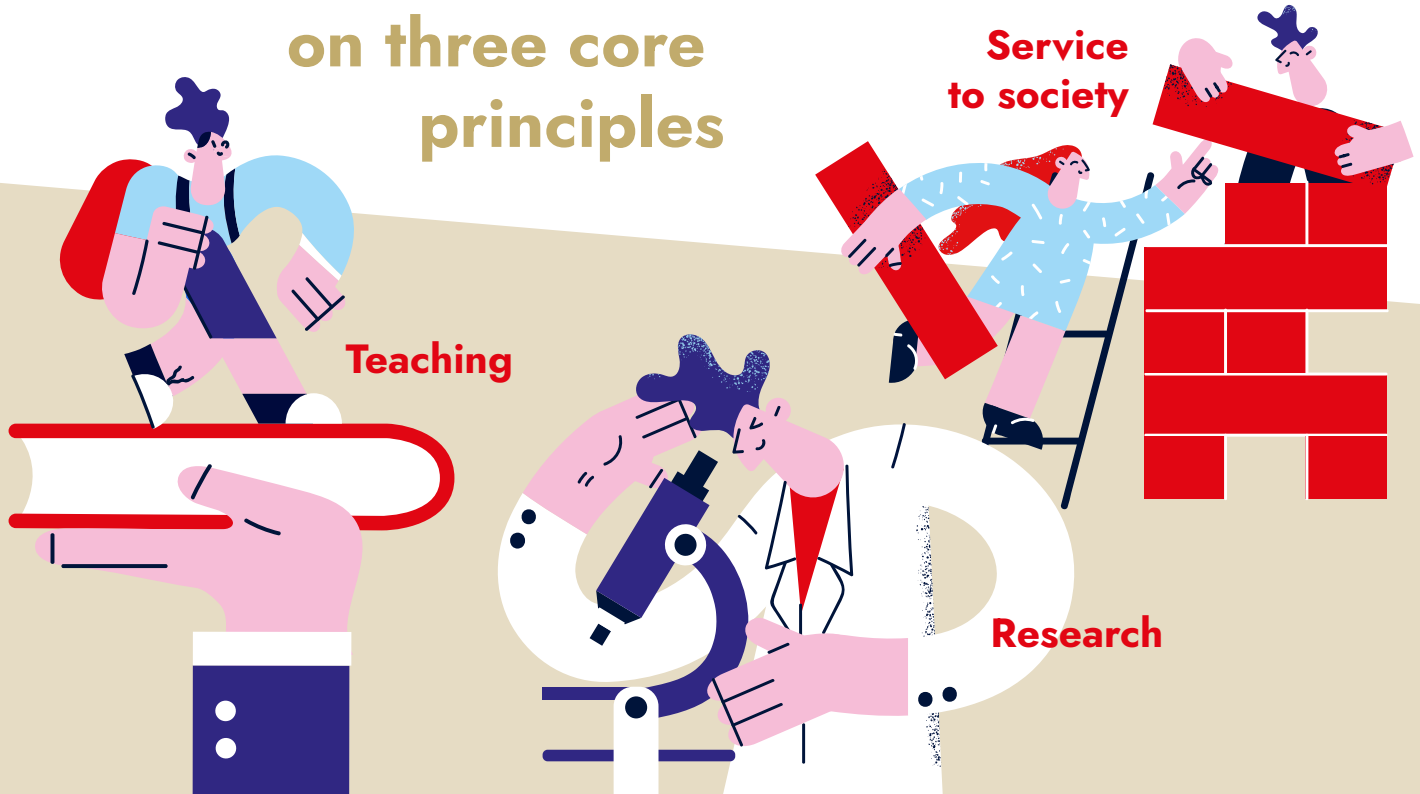
ESPOL by your side

- Multicultural admin and teaching team
- Dedicated International Mobility team

The+

- Regular conferences and debates on current issues
- Foreign languages courses: English, Spanish, Portuguese, Italian, German, Chinese, Russian, Arabic, Japanese, Korean, Dutch, Polish, Turkish
- International exchange programmes starting from the second year
- Dynamic student life
- Study trips (Brussels, Luxembourg and Geneva)

ESPOL is founded on three core principles



Our academic programmes

Our programmes on espol-lille.eu/



Bachelor's Programmes

Bachelor's degree in Political Science

Bachelor's degree in international relations

Bachelor's degree in Philosophy, Politics and Economics

Master's Programmes,

fully in English

Master's in Multilevel Governance in Europe

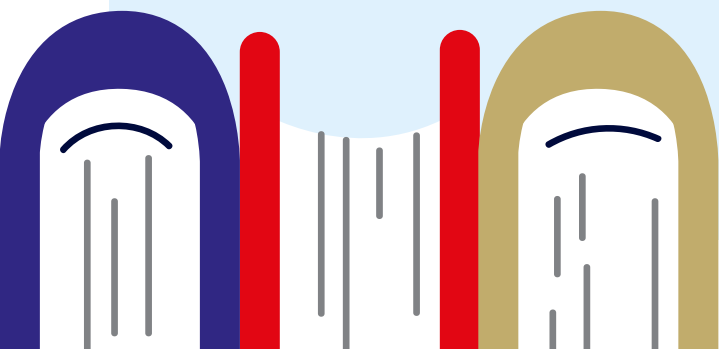
Master's in Food Politics and Sustainable Development

Master's in International and Security Politics

Master's in Digital Politics and Governance

Programme in Global and European Politics

(1 or 2 semesters programme, fully in English)



Student life, support and services

ESPOL study trips: experience the regulation and consequences of global politics yourself

Several field courses will be organized during your stay at ESPOL. During the first year, a 3-4 day trip will take you to Geneva, Switzerland, where you will have the opportunity to meet policy-makers from many agencies of the United Nations and international NGOs. In the second year, we will take you to the heart of European policy-making: Brussels, Belgium, where we will be visiting different European institutions. Finally, students in the Food Politics will benefit from additional study trips, including Rungis International Market, the largest wholesale market in the world, the Paris International Agricultural Show, as well as farm visits and local food initiatives.



Learning from the best: ESPOL-LAB conferences and seminars

ESPOL does not only provide students with courses, but also with an exciting intellectual life: your professors are also researchers whose work benefit students. Conferences and seminars organized by ESPOL-LAB, the research lab at ESPOL, are available to our master's students. For a glimpse into our research activities, have a look at the research section on our website: <https://espol-lille.eu/research/>



Beyond the classroom: professional training courses and internships

Courses at ESPOL take you beyond the classroom by providing practical tools necessary for a rapid integration into the professional world (career development modules, management, media training, etc.). With the aim of helping its students to enter a career after graduation, the ESPOL master's programmes are designed to help students get the best skills and career options. Different workshops and meetings with professionals are organized.

A commitment towards the environment: a «zero paper» experiment

The ESPOL Master's programmes have been selected to take part in a «zero-paper» experiment. Lille Catholic University will gradually reduce wastage of used paper and encourage the use of electronic devices and cloud sharing practices.

Martin BRUN
ALUMNI Master in international
security policy



The multidisciplinary and multilingual dimension of this degree reinforced my foreign language skills while providing me with conceptual and theoretical tools that have sharpened my ability to understand contemporary international issues and enable me to conduct in-depth analysis. On the strength of these skills, I joined the UNDSS (UN) office in Panama, where I am doing a training course as a junior analyst on the Latin America and Caribbean zone.

After my under graduate education and working professionally I decided that the next logical step in my career would be to study in a world class institution such as ESPOL that offers not only diverse international perspectives but also provides a highly respected education.

A Thursday in my life at ESPOL



**Apolline
Combet**

ALUMNI student of the Masters
programme in International
Security



5:40 PM

I go back riding my bike to the university to attend my Arabic class



4:00 PM

It's "goûter" time ! It's a tradition we have with my flatmates to share a tea and either a cake or crepes at this time.



2:00 PM

I start working on the texts I have to read for next week and on my future presentations. I keep about half an hour to continue my research on my master thesis



6- 7.30 PM

Arabic class. I am in the third level, so it gets a bit harder this year. We are reading tales and talking about what we like. I struggle a bit with that language, but the teacher really follows every student and help us to deal with our issues on certain grammatical forms



8:00 PM

Dinner. On Wednesday I do not cook as my classes finish late. Tonight, it is a homemade quiche with salad, cheese and a clementine as a dessert.



8:00 AM

I wake up, take my breakfast with one of my roommates and get ready to go to class



9:15 AM

I take my v'lille (self service bike) and ride to the university. The classes usually start at 10 but I like to get to school earlier to work a bit on the coming class and talk with my friends before the teacher arrives



1:15 PM

I go back home, riding my bike under either the rain or the sun. Wednesday, I have free afternoon. I go back home, take a tea and have a 20min nap before getting to work.



12:00 AM

Class ends. My friends and I go eat and the university's restaurant. As a good Frenchie I always take cheese. We sit and stay there for about an hour, hour and a half depending on how many people there are.



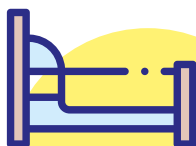
10:00 AM

Class starts. Wednesday I have research methodology, it is a very interactive class where the teacher give us hints about how to deal with our master thesis and provide solutions to the problems we are facing



9:00 PM

With one of my flatmates we go to the cinema, watch usually a French comedy to laugh and relax a bit. Of course, we go by bike!

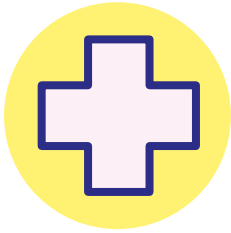


11:00 PM

come back home, brush my teeth and go to bed!



**Your
university
life**



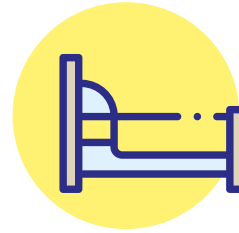
Healthcare

The University clinic, the Centre Polyvalent de Santé Universitaire (CPSU), is open all week and provides consultations in general practice and gynaecology, nursing care, sophrology workshops and psychological counselling.



Sport

A gymnasium is reserved for students of the Lille Catholic University or associated schools. It is open 6 days a week, programming various group activities as well as providing free access to the gym and its equipment.



Accommodation

The university's accommodation service, the Association d'Entraide Universitaire (AEU), gives students access to a range of 21 university residences, with over 1,200 rooms (prices ranging from €205 to €420 per month).

For more information:

03.20.15.97.70
www.all-lacatho.fr/en/



Catering

A university restaurant is open for lunch and dinner in the heart of the campus. It offers a variety of healthy menus at affordable prices



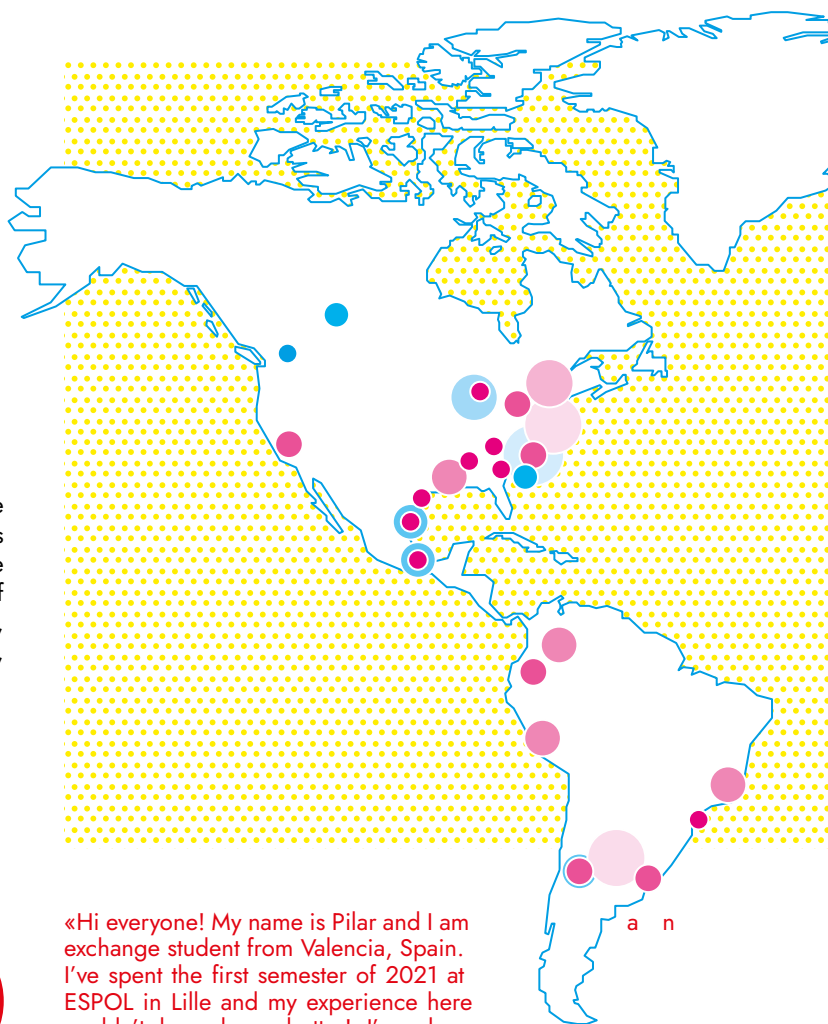
An administration at your disposal

A team of 17 people is on hand to help you to get your new student life off to a good start; it will remain by your side throughout your studies at ESPOL

International Outlook

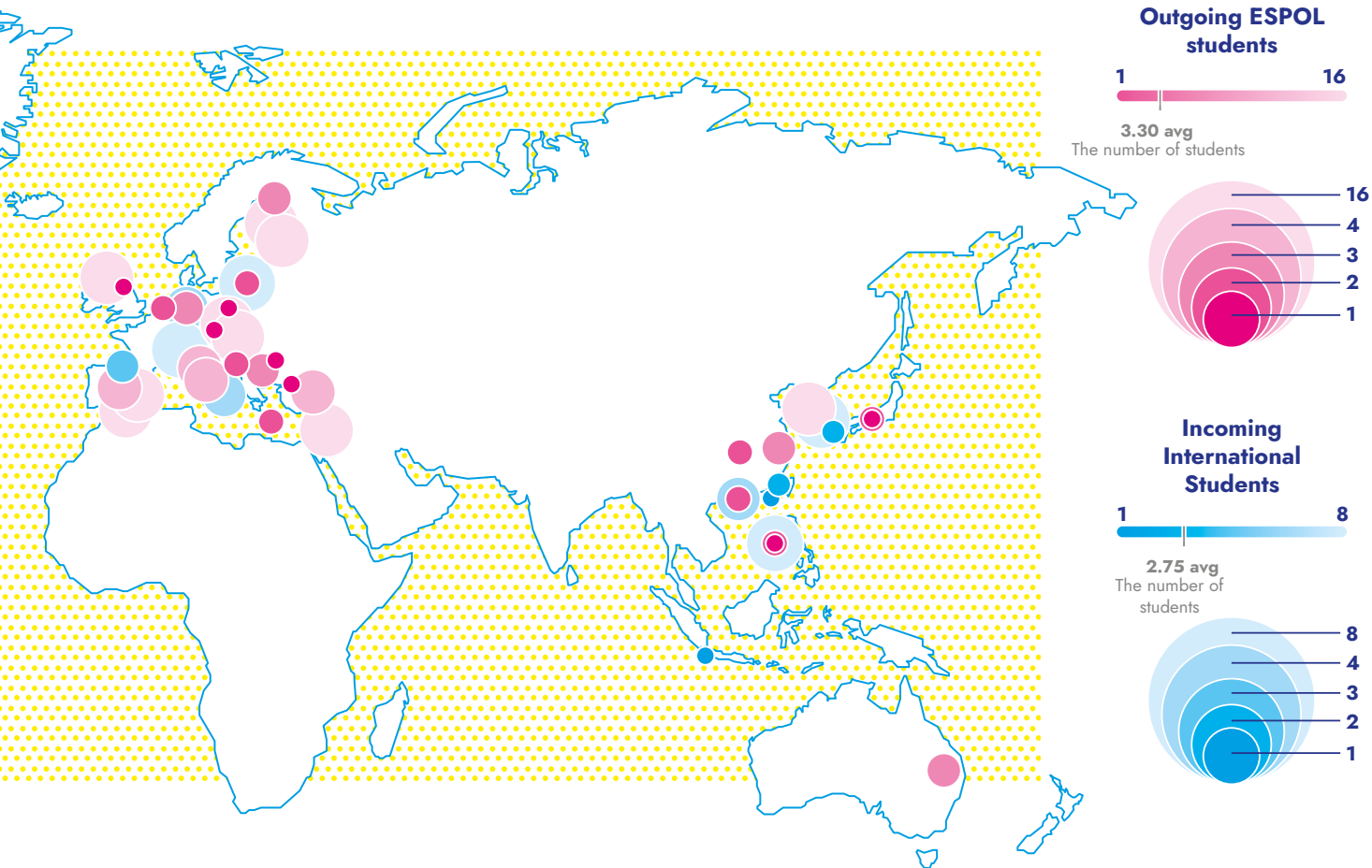
Everyday life matters too:
ESPOL's vibrant international
community

ESPOL bachelor and master's students are happy to welcome many international students every year, either on exchanges or enrolled in our various programmes. ESPOL students are also eager to organise themselves and participate in the life of the community: different associations (sport, entertainment, politics, environment, etc) will help students fill their days, should they need to!



«Hi everyone! My name is Pilar and I am exchange student from Valencia, Spain. I've spent the first semester of 2021 at ESPOL in Lille and my experience here couldn't have been better! I've chosen ESPOL for my mobility mainly because of the university, since I was told it is excellent and very dynamic, and because of the language, given that I can practise not only French but also English. During these months I had the opportunity of discovering the city of Lille, which has surprised me because of its people, the beauty of its local buildings, the mix of cultures from France and Belgium, its location which is perfect to travel around Europe and its welcoming spirit for everyone. I'd highly recommend living this experience to everyone!!»

Pilar G.



85%
of Espol's students
study abroad

150
exchange students
are welcomed to
ESPOL every year



Andrew Glencross

Director of ESPOL

andrew.glencross@univ-catholille.fr



Oliwia Baran

Head of Development
and Communications

oliwia.baran@univ-catholille.fr



François Briatte

Co-Head of International Mobility and
Associate Professor in Political Science

francois.briatte@univ-catholille.fr



Robin Casteleyn

Global International Mobility
Coordinator

robin.casteleyn@univ-catholille.fr



Clémence Carlier

Erasmus+ International Mobility
Coordinator

clemence.carlier @univ-catholille.fr



Michael Holmes

Co-Head of International Mobility and Associate
Professor in Political Science

michael.holmes@univ-catholille.fr

ESPOL

Espol

60 Boulevard Vauban

CS 40109

59016 lille cedex

T. 03 59 56 79 54

espol-incoming@univ-catholille.fr



ESPOL Lille



ESPOL-Lille



ESPOL_Lille

ESPOL-lille.eu