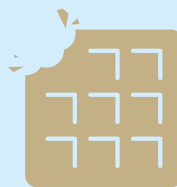
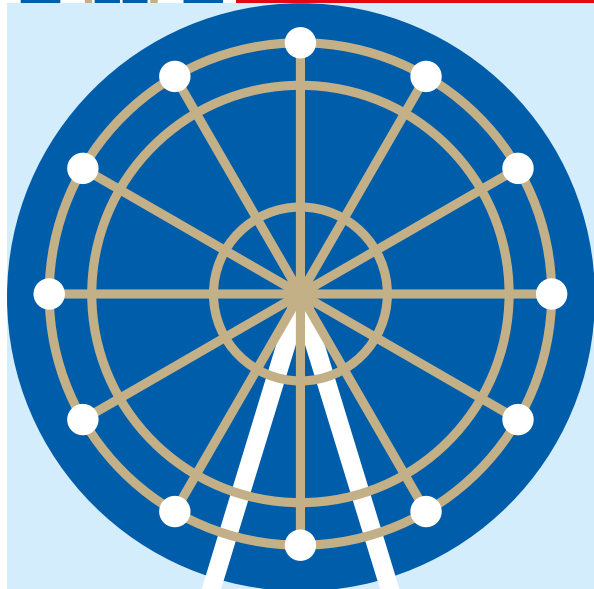


Why

ESPOL?





ESPOL

The European School of Political and Social Sciences, was established to prepare students for political and international careers through innovative pedagogy in a multicultural environment. Ten years on from its launch, ESPOL continues to thrive thanks to its bilingual (French/English) and interdisciplinary programme, which now consists of three undergraduate bachelors degrees, four masters degrees, and a doctoral school.

ESPOL has always been open to the world and to Europe in particular. This is reflected in our team, which represents 12 different nationalities, in the fact that 86% of our students go abroad to study at one of our 150 partner universities and that, in return, we welcome more than 150 exchange students every year, a figure that is constantly increasing.

ESPOL's wide variety of classes offers students the possibility to discover new and exciting topics in politics, international relations and social science in a truly bilingual environment. Why not benefit from your time here and improve or even start learning French through our special language classes for exchange students? Beyond the intellectual environment, there is also a dense and varied network of student associations as ESPOL encourages students to become active citizens help the community and make new friends of course. In particular, there is a "buddy system" organised by COSMOPOL, our very own student society, to help integrate foreign students arriving at ESPOL.

In 2019, ESPOL moved into its new building at the heart of the beautiful campus of the Catholic University of Lille, which unlike most French universities is situated at the heart of the urban area. ESPOL thus benefits from its location in the dynamic city of Lille, a European metropolis at the crossroads of Europe. As well as having a distinguished historical and industrial past, Lille is a short train ride from Paris, Brussels, London and Amsterdam.

We hope you will discover Lille, its lively student scene, its wide range of cultural activities, and its delicious gastronomic specialities (le welsh, la carbonnade flamande; le potjevleesch, les gaufres and more) that provide a very special "joie de vivre".

Preparing students for political and international careers through innovative pedagogy in a multicultural environment: this is ESPOL's mission. Ten years after its inauguration, ESPOL has built its success on the strength of a multilingual, interdisciplinary programme and a unique educational approach.



**Andrew
Glencross**

Deputy Director for
International Affairs

We hope you will discover Lille, its delicious gastronomic specialities (le welsh, la carbonnade flamande; le potjevleesch, les gaufres and more), its unique culture and the French "Joie de vivre"

A dynamic region

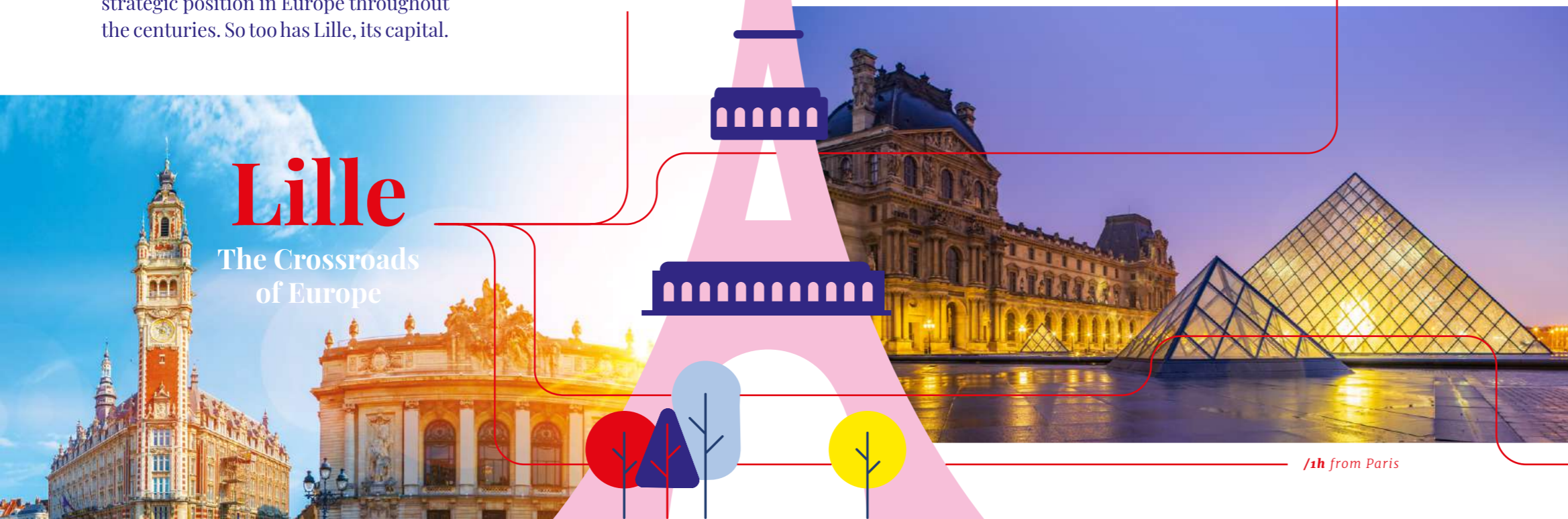
The northernmost region of France, the Hauts-de-France is a dynamic region with a strong will to develop relationships with other countries. With excellent communications and an extensive network of businesses and industries, the area has proven its strategic position in Europe throughout the centuries. So too has Lille, its capital.



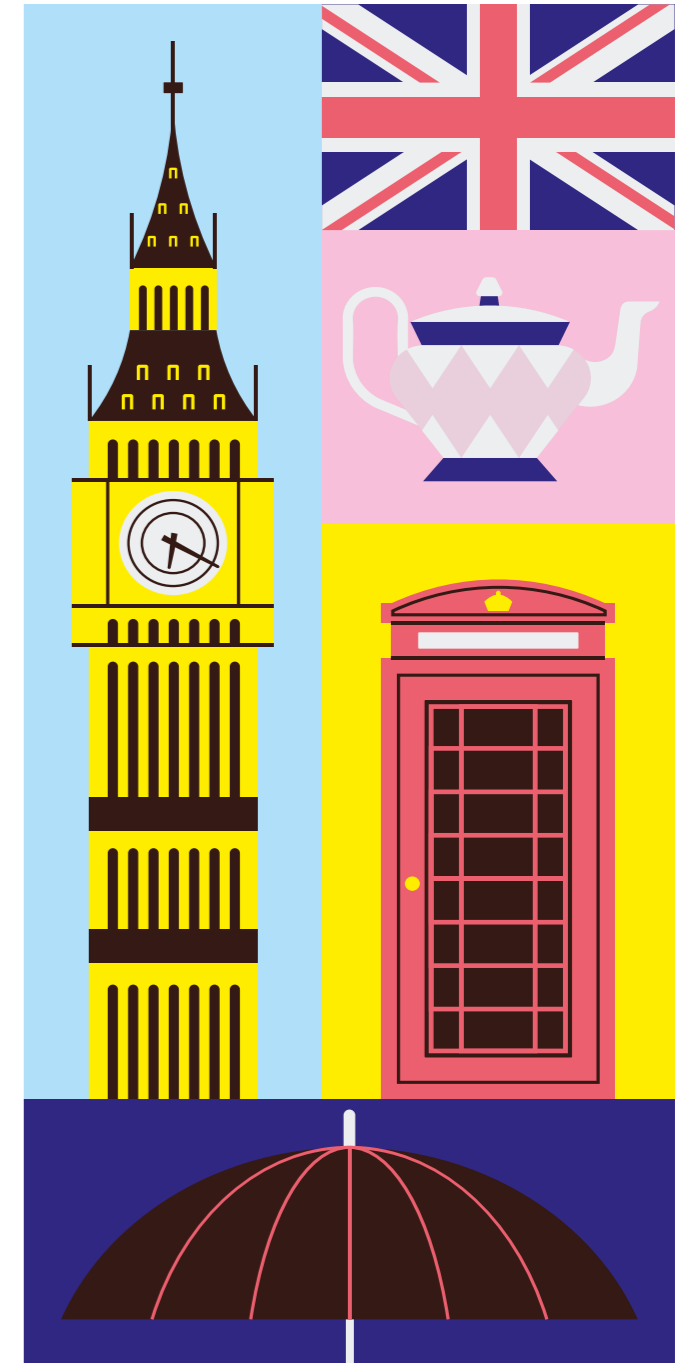
/2h30 from Amsterdam



/45m from Brussels



/1h from Paris



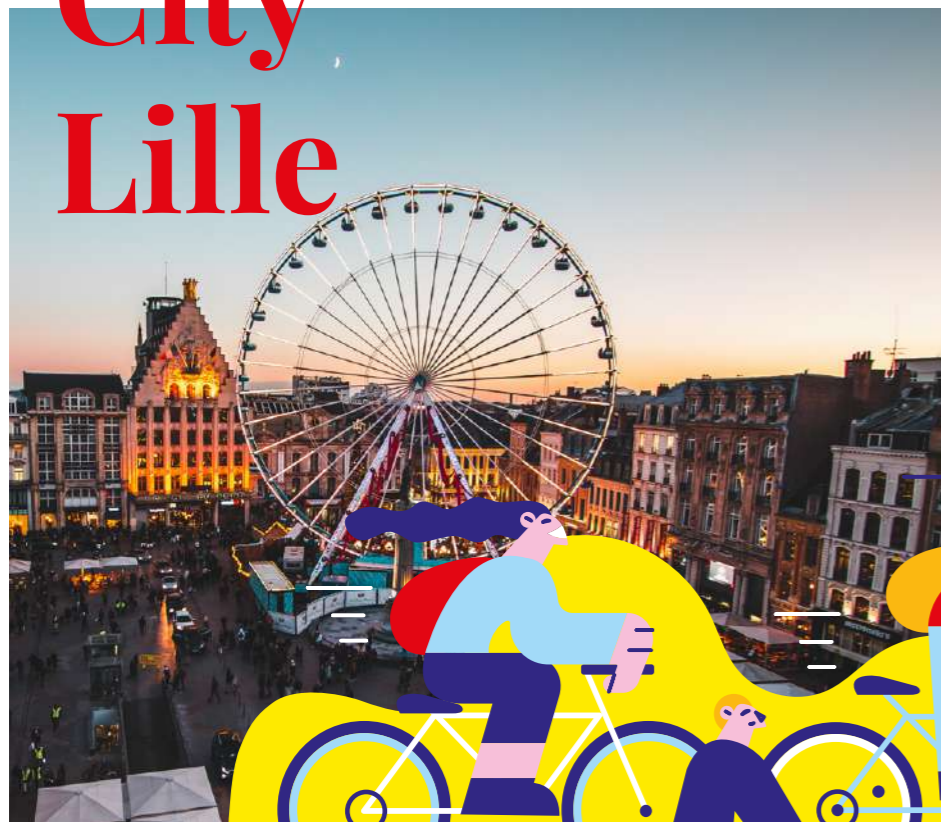
/1h30 from London

Your City Lille

You will have at your disposal all the facilities of a major city whilst still being in a 'human-sized' place that you can get about mainly on foot or by bicycle. It's easy to find your way around in Lille as there are 4 main areas:

the Old Town (le Vieux Lille) that stretches from the north of Lille to the opera house, the centre that goes from the opera house to the Place de la République, the district known as Vauban in the west of Lille and the Wazemmes district to the east.

2004
European
capital
of culture



/Lille - Grand'Place



/côte d'Opale

35
theatres

10
museums

34
festivals

20
cinemas

The famous
Braderie



LES FACULTÉS DE L'UNIVERSITÉ CATHOLIQUE DE LILLE

5

faculties

5

schools

9
research
centers

169

partner universities

200

undergraduate
and Master's
programmes



more than

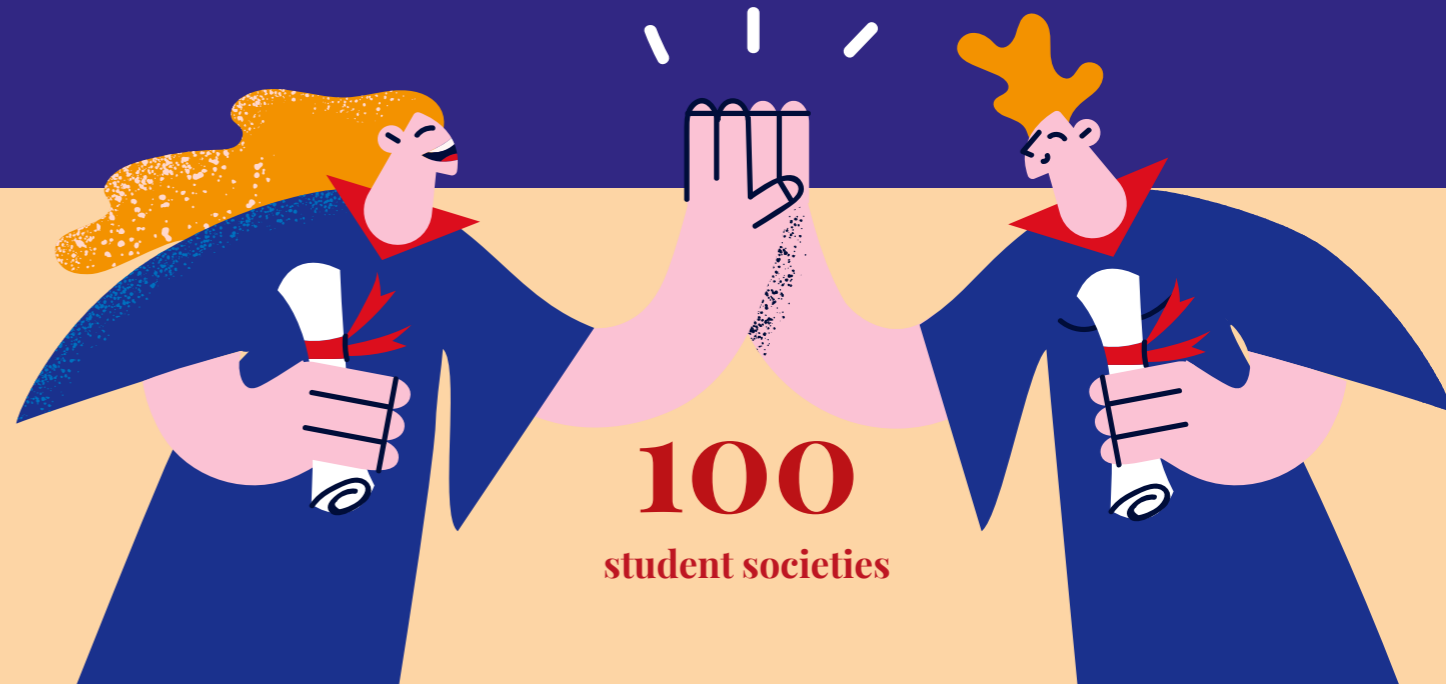
30,000

students



100

student societies





ESPOL – European School of Political and Social Sciences is a bilingual academic training programme in political science, with a strong European and international dimension.

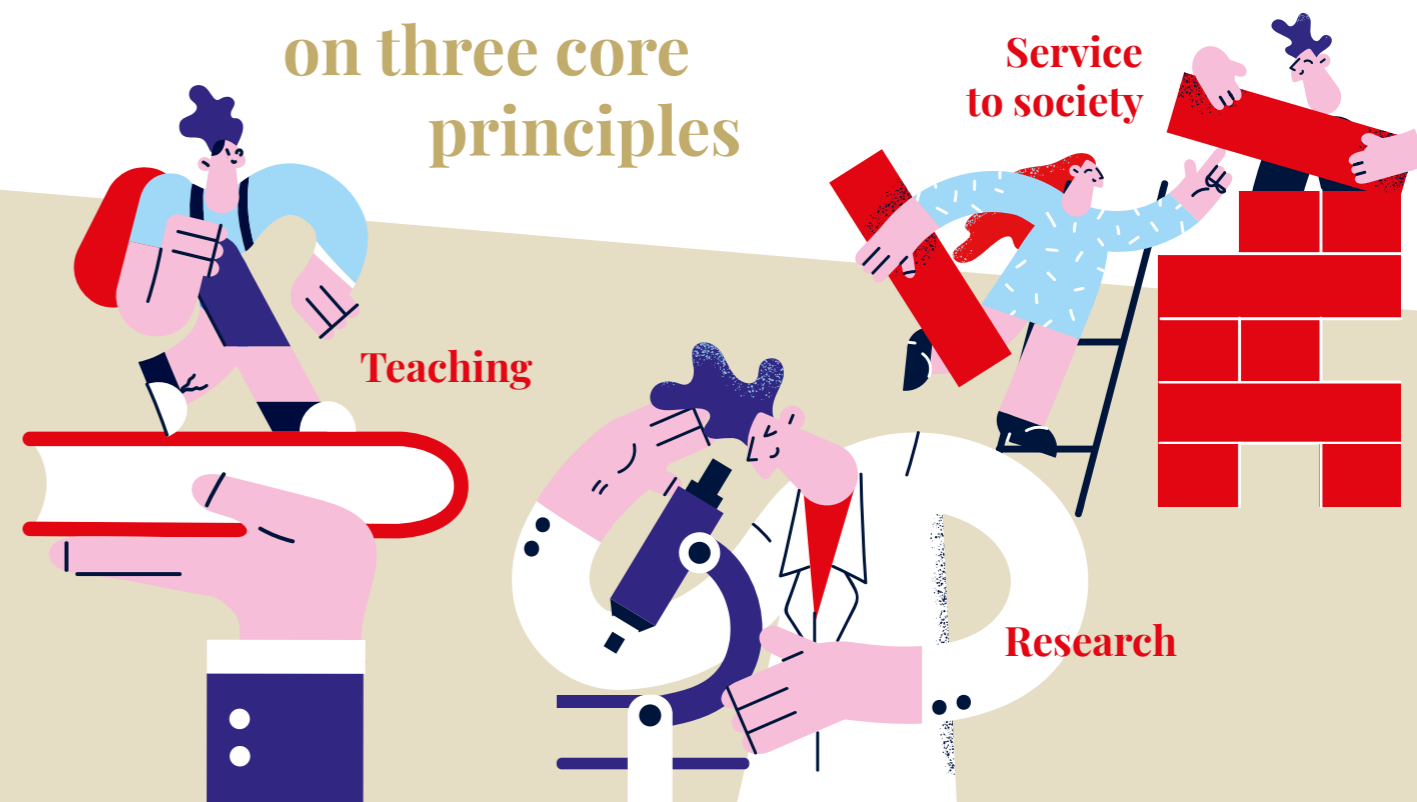
Espol by your side

- ESPOL's twelve-person administrative team
- Sixteen person full-time teaching and research team is on hand should you require any assistance
- A coordinator in charge of international mobility

The+

- Regular conferences and debates on current issues
- Foreign languages courses: English, Spanish, Portuguese, Italian, German, Chinese, Russian, Arabic, Japanese, Korean, Dutch, Polish, Turkish
- International exchange programmes starting from the second year
- Dynamic student life
- Study trips (Brussels, Luxembourg and Geneva)
- All students are required to do a minimum of 8 weeks of internship

ESPOL is founded on three core principles



Our academic programmes

Our programmes on espol-lille.eu/



Bachelor's Programmes

Bachelor's degree
in political science

Bachelor's degree in
International Relations

Bachelor's degree in
Philosophy, Politics and
Economics

Master's Programmes,

fully in English

Master's in Global and
European Politic

Master's in Food Politics and
Sustainable Development

Master's in International
and Security Politics

Master's in Digital Politics
and Governance

Programme
in Global and
European Politics

(1 or 2 semesters programme,
fully in English)

Student life, support and services

ESPOL study trips: experience the regulation and consequences of global politics yourself

Several field courses will be organized during your stay at ESPOL. During the first year, a 3–4 day trip will take you to Geneva, Switzerland, where you will have the opportunity to meet policy-makers from many agencies of the United Nations and international NGOs. In the second year, we will take you to the heart of European policy-making: Brussels, Belgium, where we will be visiting different European institutions. Finally, students in the Food Politics will benefit from additional study trips, including Rungis International Market, the largest wholesale market in the world, the Paris International Agricultural Show, as well as farm visits and local food initiatives.



Learning from the best: ESPOL-LAB conferences and seminars

ESPOL does not only provide students with courses, but also with an exciting intellectual life: your professors are also researchers whose work benefit students. Conferences and seminars organized by ESPOL-LAB, the research lab at ESPOL, are available to our master's students. For a glimpse into our research activities, have a look at the research section on our website: <https://espol-lille.eu/research/>



Martin BRUN
ALUMNI Master in international security policy

Beyond the classroom: professional training courses and internships

Courses at ESPOL take you beyond the classroom by providing practical tools necessary for a rapid integration into the professional world (career development modules, management, media training, etc.). With the aim of helping its students to enter a career after graduation, the ESPOL master's programmes are designed to help students get the best skills and career options. Different workshops and meetings with professionals are organized.

A commitment towards the environment: a «zero paper» experiment

The ESPOL Master's programmes have been selected to take part in a «zero-paper» experiment. Lille Catholic University will gradually reduce wastage of used paper and encourage the use of electronic devices and cloud sharing practices.

The multidisciplinary and multilingual dimension of this degree reinforced my foreign language skills while providing me with conceptual and theoretical tools that have sharpened my ability to understand contemporary international issues and enable me to conduct in-depth analysis. On the strength of these skills, I joined the UNDSS (UN) office in Panama, where I am doing a training course as a junior analyst on the Latin America and Caribbean zone. After my under graduate education and working professionally I decided that the next logical step in my career would be to study in a world class institution such as ESPOL that offers not only diverse international perspectives but also provides a highly respected education.

Your university life



Healthcare

The University clinic, the Centre Polyvalent de Santé Universitaire (CPSU), is open all week and provides consultations in general practice and gynaecology, nursing care, sophrology workshops and psychological counselling.



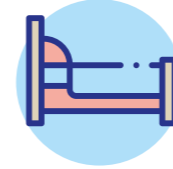
Sport

A gymnasium is reserved for students of the Lille Catholic University or associated schools. It is open 6 days a week, programming various group activities as well as providing free access to the gym and its equipment.



Catering

A university restaurant is open for lunch and dinner in the heart of the campus. It offers a variety of healthy menus at affordable prices



Accommodation

The university's accommodation service, the Association d'Entraide Universitaire (AEU), gives students access to a range of 21 university residences, with over 1,200 rooms (prices ranging from €205 to €420 per month).

For more information:
All la Catho-Accommodation
department
47 bd Vauban-59000 Lille

03.20.15.97.70
www.all-lacatho.fr/en/
www.aeu.asso.fr



An administration at your disposal

A team of 12 people is on hand to help you to get your new student life off to a good start; it will remain by your side throughout your studies at ESPOL



International exchange and cooperation

Everyday life matters too: ESPOL's vibrant international community

ESPOL bachelor and master's students are happy to welcome many international students every year, either on exchanges or enrolled in our various programmes. ESPOL students are also eager to organise themselves and participate in the life of the community: different associations (sport, entertainment, politics, environment, etc) will help students fill their days, should they need to!



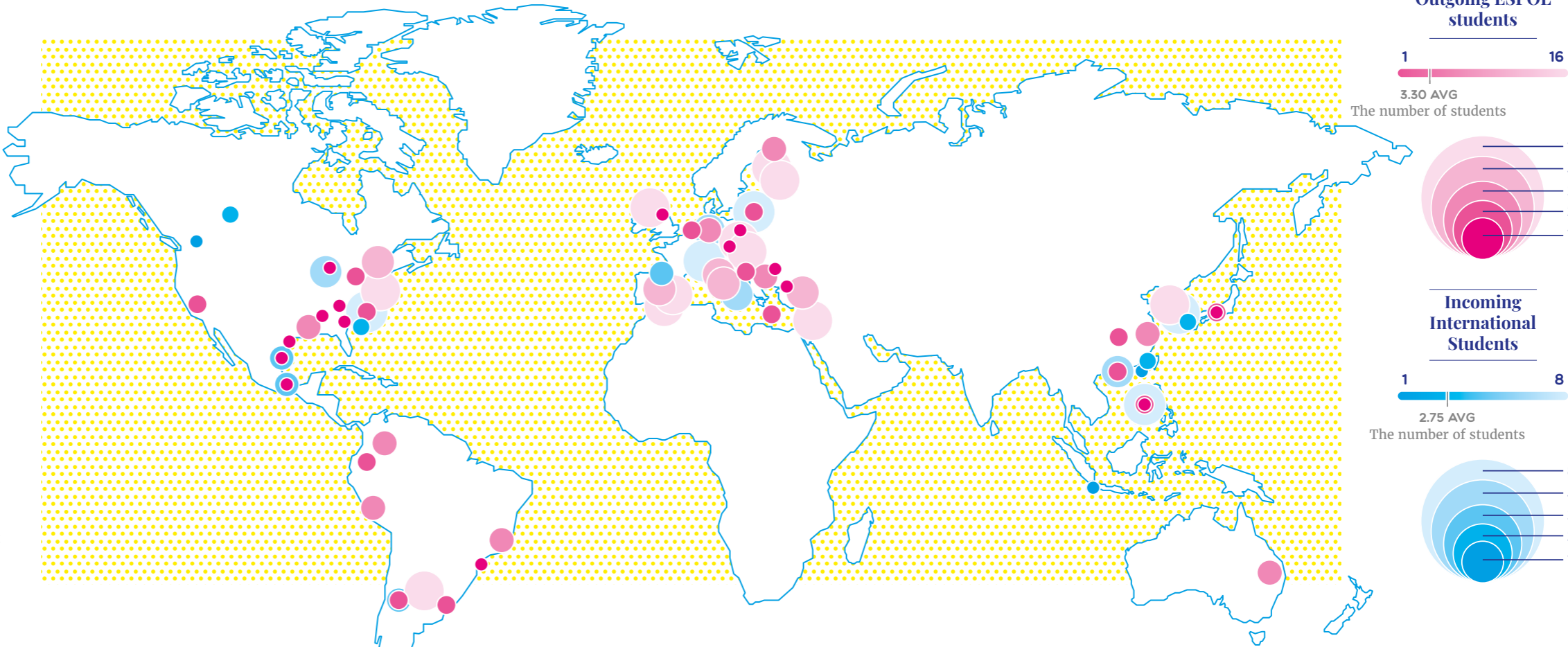
«Hi everyone! My name is Pilar and I am an exchange student from Valencia, Spain. I've spent the first semester of 2021 at ESPOL in Lille and my experience here couldn't have been better! I've chosen ESPOL for my mobility mainly because of the university, since I was told it is excellent and very dynamic, and because of the language, given that I can practise not only French but also English.

As for my experience here, at the beginning I thought it would be very difficult to join with other students who had been studying here longer... but in the end, everyone was so nice and it was so easy to break the ice! The university is very friendly with international students and it's given us a lot of facilities to balance studies with living the exchange experience. All the teachers were accommodating to us and made us feel very comfortable as if we were at home all the time; Moreover, it is important to say that all the classes are very interesting and the amount of subjects offered by the university is very wide, ranging and practical. In addition, there's always a very good atmosphere at the university not only with French

students but also with international students and the fact that ESPOL organizes all kinds of events allows us to have a better understanding of other cultures and different people around the world.

During these months I had the opportunity of discovering the city of Lille, which has surprised me because of its people, the beauty of its local buildings, the mix of cultures from France and Belgium, its location which is perfect to travel around Europe and its welcoming spirit for everyone. I'd highly recommend living this experience to everyone!!»

Pilar G.





Andrew Glencross

Deputy Director for
International Affairs

andrew.glencross@univ-catholille.fr



François Briatte

Co-Head of International
Mobility and Associate Professor
in Political Science

francois.briatte@univ-catholille.fr



Michael Holmes

Co-Head of International
Mobility and Associate Professor
in Political Science

michael.holmes@univ-catholille.fr



Robin Casteleyn

International Mobility
Coordinator

robin.casteleyn@univ-catholille.fr



Oliwia Baran


Head of Development and Communications

oliwia.baran@univ-catholille.fr



Espol
60 Boulevard Vauban
CS 40109
59016 lille cedex
T. 03 59 56 79 54
espol@univ-catholille.fr

 ESPOL lille

 @espollille

 [espol_lille](https://www.instagram.com/espol_lille)

espol-lille.eu